

## SD SERIES - SPECIFICATION DATA SHEET 1.2



### Kirk Key Interlock Company

9048 Meridian Circle NW, North Canton, OH 44720

Phone: 234.209.9301 • Fax: 330.497.4400 • Toll Free: 800.438.2442

Website: [www.kirkkey.com](http://www.kirkkey.com) Email: [sales@kirkkey.com](mailto:sales@kirkkey.com)

### Type B - Base Mounted



The Type B interlock is commonly base or flange mounted. The interlock housing is made from cast bronze. The locking bolt is made of 5/8" diameter stainless steel. The throw, or travel, of the locking bolt is 3/4".

#### OPTIONS

- Locking Bolt Length - when ordering, specify the length of the locking bolt in the withdrawn position. Standard lengths are 1/4", 3/8", 1/2", 3/4", 1", 2", and 3". Non-standard lengths are also available. (1" Lock Bolt shown on drawing)
- Key Removable - the key(s) is removable when the locking bolt is either in the extended (E) or withdrawn (W) position. Please choose E or W when ordering an interlock. Key removable extended is the most common because the locking bolt is typically extended to block/engage something.
- Multi-Cylinder - up to 7 cylinders available. Designate "E" or "W" key removable position for each cylinder.
- Stamp Key Interchange - specify an alphanumeric code to be stamped on the cylinder face and the key (e.g. A1, A2, B1, etc. - up to 5 characters). See SD Series Data Sheet for Keys (3.4) and Terminology (4.1) for details.
- Auxiliary Switches - see SD Series Data Sheets for Type Thermoplastic (2.3), Type S (2.4) and Type K (2.5) for details.
- Protective Cover - see SD Series Data Sheet for Protective Covers (3.1) for details.
- Mounting Bolts - see SD Series Data Sheet for Mounting Bolts (3.2) for details.
- "Opposite Hand" - see SD Series Data Sheet for Terminology (4.1) for details.

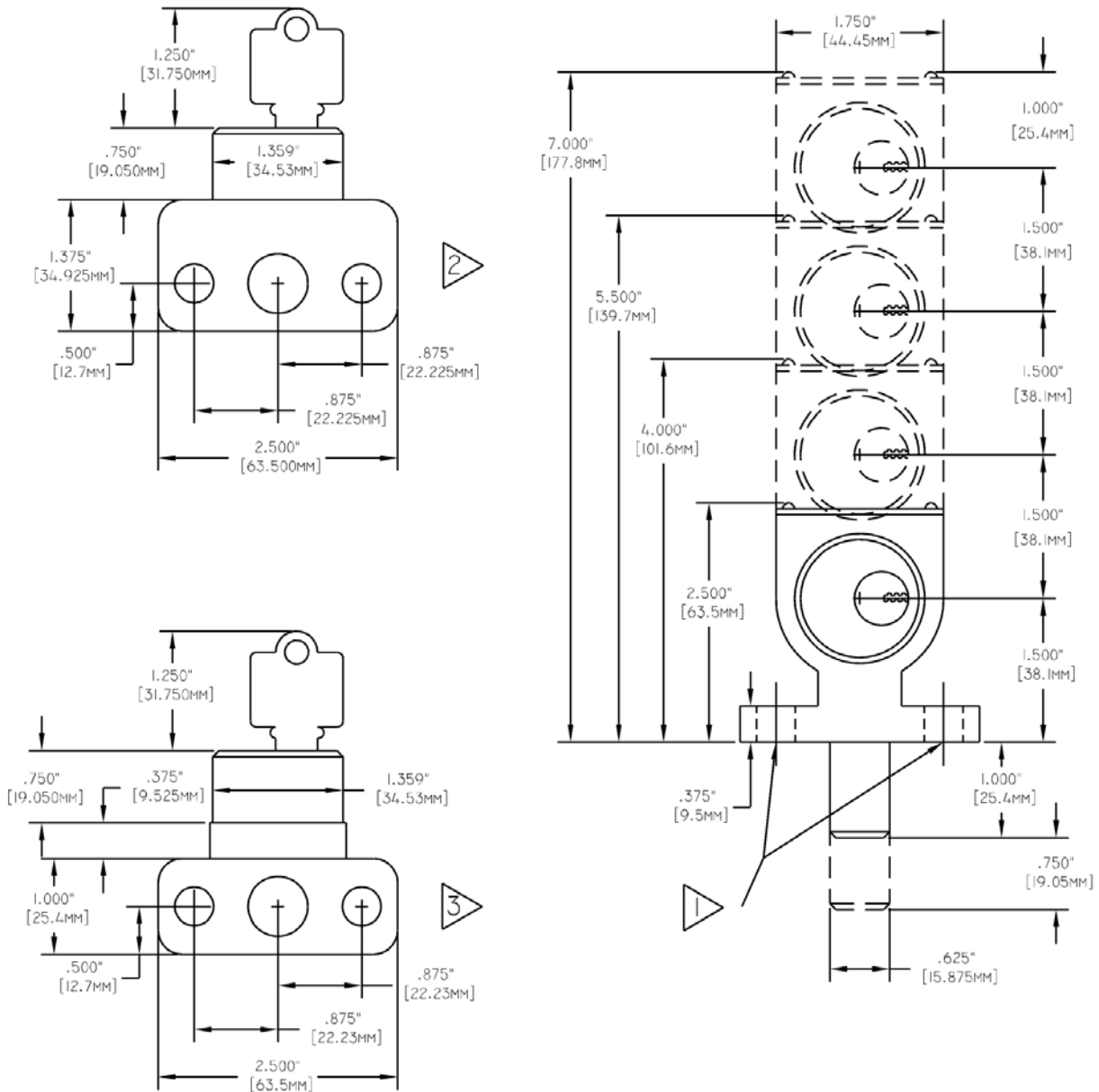
# SD SERIES - SPECIFICATION DATA SHEET 1.2



## Kirk Key Interlock Company

9048 Meridian Circle NW, North Canton, OH 44720  
 Phone: 234.209.9301 • Fax: 330.497.4400 • Toll Free: 800.438.2442  
 Website: www.kirkkey.com Email: sales@kirkkey.com

## Type B - Base Mounted



**NOTES:**

- 1) 0.4062" (10.32mm) holes for mounting bolts.
- 2) Footprint of multiple cylinder Type B or when equipped with a Thermoplastic Bodied Switch
- 3) Footprint of single cylinder Type B.