

SD SERIES - SPECIFICATION DATA SHEET 1.7



www.kirkkey.com

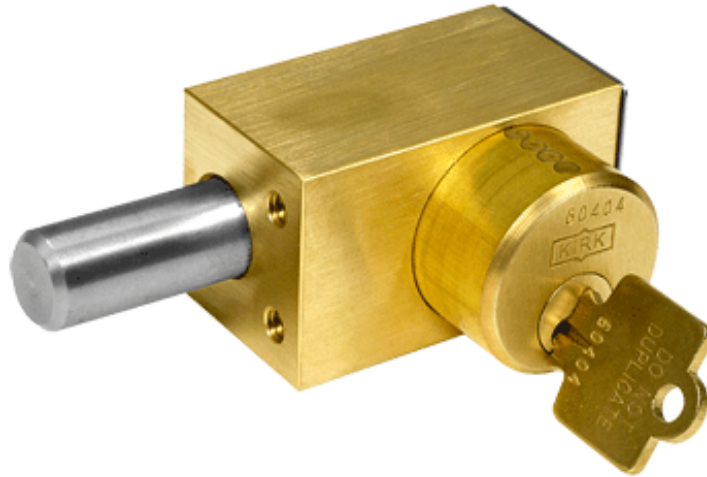
Kirk Key Interlock Company

211 Wetmore Ave. S.E., Massillon, OH 44646

Phone: 330.833.8223 • Fax: 330.833.1528 • Toll Free: 800.438.2442

Email: sales@kirkkey.com

Type FN - Front (Narrow) Mounted



The Type FN interlock has a more narrow housing than the Type F interlock and is mounted by means of 1/4"-20 tapped holes in the end of the housing. The interlock housing is made from brass. The locking bolt is made of 5/8" diameter stainless steel. The throw, or travel, of the locking bolt is 3/4".

OPTIONS

- Locking Bolt Length - when ordering, specify the length of the locking bolt in the withdrawn position. Standard lengths are 1/4", 3/8", 1/2", 3/4", 1", 2", and 3". Non-standard lengths are also available. (1" Lock Bolt shown on drawing)
- Key Removable - the key(s) is removable when the locking bolt is either in the extended (E) or withdrawn (W) position. Please choose "E" or "W" when ordering an interlock. Key removable extended is the most common because the locking bolt is typically extended to block/engage something.
- Multi-Cylinder - up to 3 cylinders available. Designate "E" or "W" key removable position for each cylinder.
- Stamp Key Interchange - specify an alphanumeric code to be stamped on the cylinder face and the key (e.g. A1, A2, B1, etc. - up to 5 characters). See SD Series Data Sheet for Keys (3.4) and Terminology (4.1) for details.
- Auxiliary Switches - see SD Series Data Sheets for Type Thermoplastic (2.3).
- Dust Covers - see SD Series Data Sheet for Dust Covers (3.1) for details.
- Mounting Bolts - see SD Series Data Sheet for Mounting Bolts (3.2) for details.
- "Opposite Hand" - see SD Series Data Sheet for Terminology (4.1) for details.
- Adapter Plate - allows additional mounting options. See SD Series Data Sheet 3.3 for more details (FN Plate).

SD SERIES - SPECIFICATION DATA SHEET 1.7

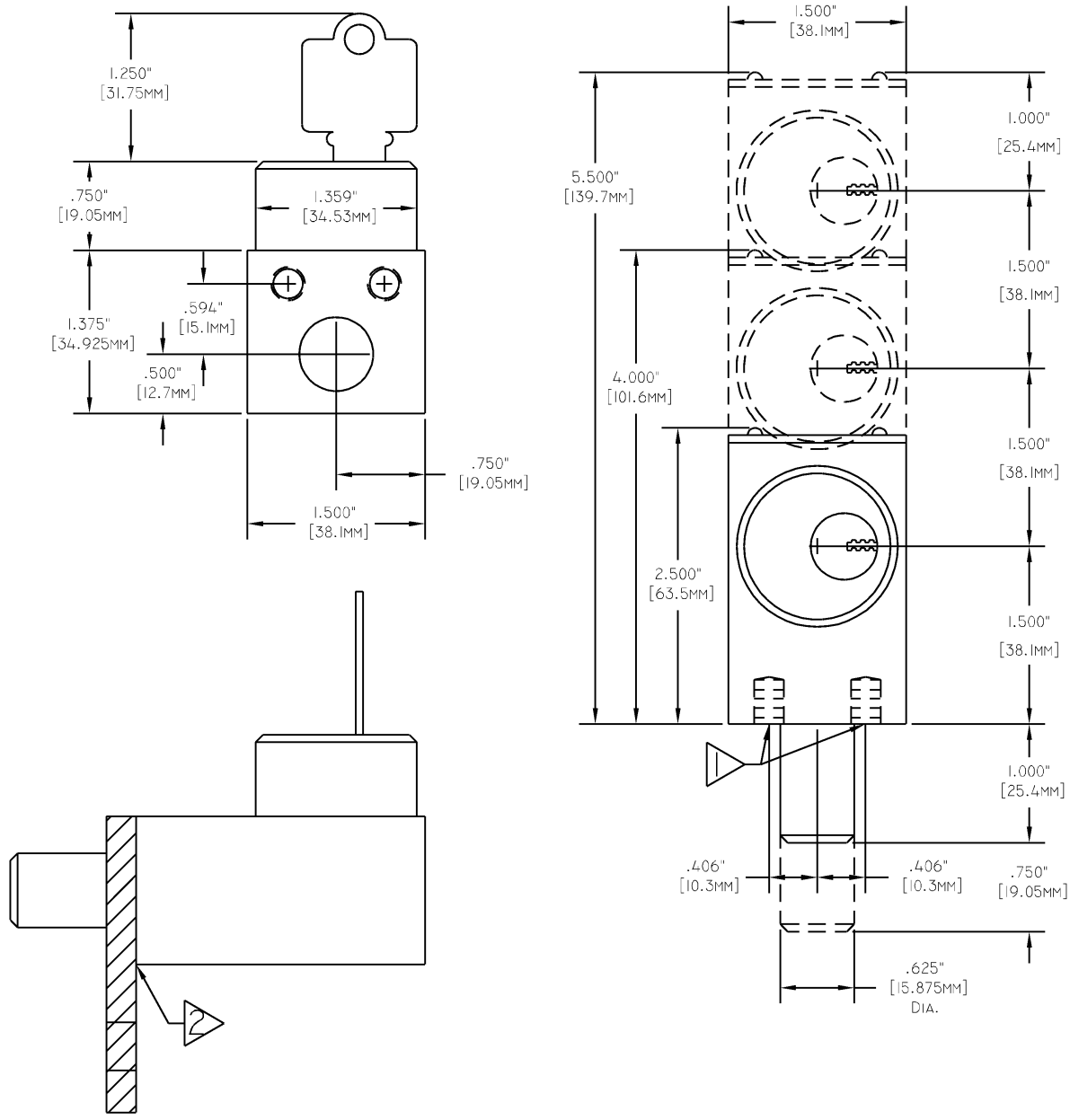


www.kirkkey.com

Kirk Key Interlock Company

211 Wetmore Ave. S.E., Massillon, OH 44646
 Phone: 330.833.8223 • Fax: 330.833.1528 • Toll Free: 800.438.2442
 Email: sales@kirkkey.com

Type FN - Front (Narrow) Mounted



NOTES:

- 1) 1/4"-20 x 3/8" (9.525mm) deep for mounting (2 holes).
- 2) Optional FN adapter plate (see SD Series Data Sheet 3.3 for details).