

SD SERIES - SPECIFICATION DATA SHEET 2.8



www.kirkkey.com

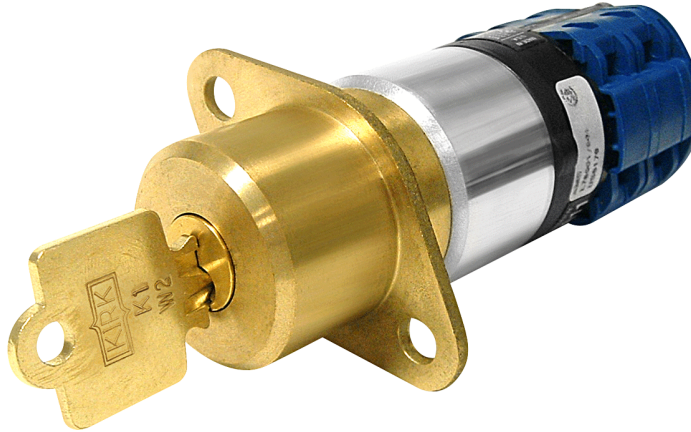
Kirk Key Interlock Company

211 Wetmore Ave. S.E., Massillon, OH 44646

Phone: 330.833.8223 • Fax: 330.833.1528 • Toll Free: 800.438.2442

Email: sales@kirkkey.com

Type PPS 20 Amp Panel Mounted Switch



The SD Series Power Panel Switch is a key actuated, rotary, two-position switch designed for isolation or switching of control circuitry. It is available with switch ratings of 20, 25, 40, 63A. Perfectly suited for applications requiring temporary off-load isolation.

The PPS is designed so that the key will rotate 90 degrees clockwise to the trapped position. Rotation of the key to either the trapped or to the released position will cause the switch contacts to change state.

The standard PPS can be panel mounted with 1/4" diameter (7mm) mounting bolts. The quantity and location of the mounting holes are shown on the drawings that follow.

An optional IP65 Polycarbonate enclosure allows surface mounting of the PPS using four bolts suitable for your specific application. Enclosure photo and drawing shown on pg 3.

Standard switch contact arrangements are shown in the chart on pg 2. Consult the factory for other contact arrangements. Switch ratings and specifications are outlined on SD Series Data Sheet 2.8a.

The SD Series PPS key is nickel-silver and lock body is made from brass.

Options: Switch Rating and Contact Arrangements—see chart on page 2 and ordering guide on page 4.

Mounting Options—Panel Mounting (standard) or Enclosed in an IP65 Polycarbonate enclosure. The enclosed version is supplied with an (M20) .20-.35" cable gland and lock nut.

Stamp Key Interchange—Specify an alphanumeric code to be stamped on the key and cylinder face (e.g. A1, A2, K1, etc.—up to five characters). See SD Series Data Sheet for Keys (3.4) and Terminology (4.1) for details.

Dust Cover—See SD Series Data Sheet 3.1 for details.

Mounting Bolts—See SD Series Data Sheet 3.2 for details.

SD SERIES - SPECIFICATION DATA SHEET 2.8

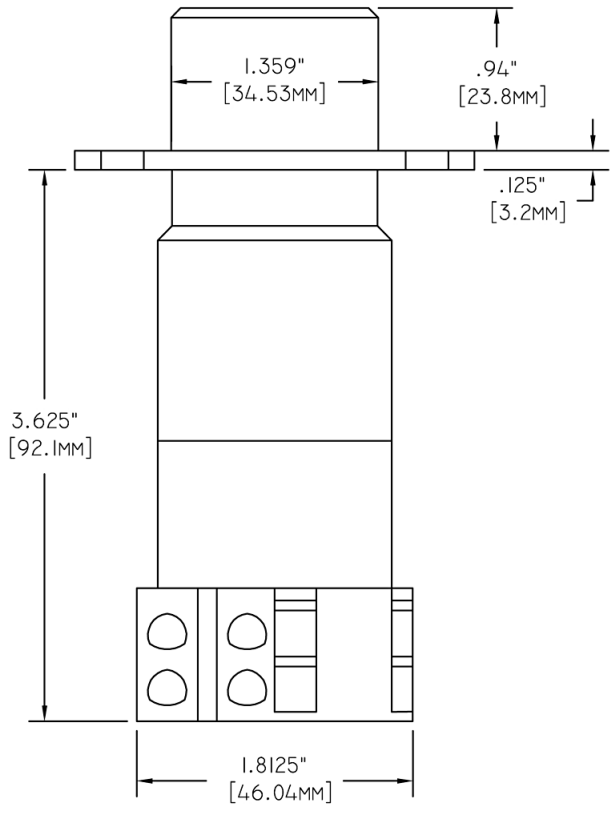
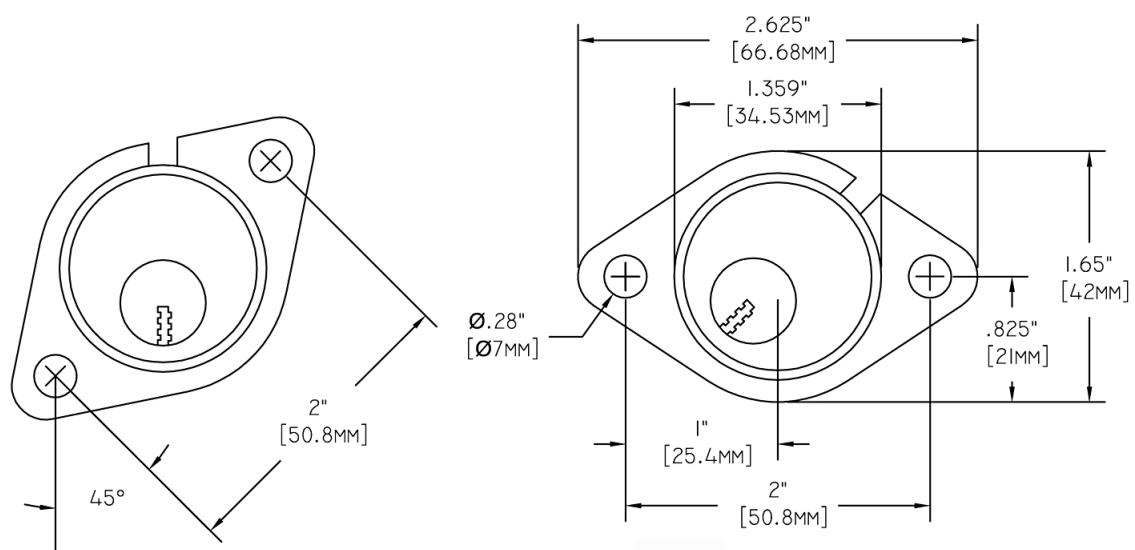


www.kirkkey.com

Kirk Key Interlock Company

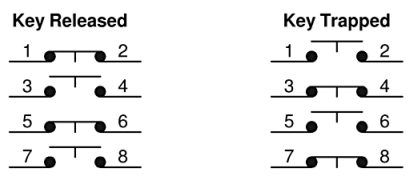
211 Wetmore Ave. S.E., Massillon, OH 44646
 Phone: 330.833.8223 • Fax: 330.833.1528 • Toll Free: 800.438.2442
 Email: sales@kirkkey.com

Type PPS 20 Amp Panel Mounted Switch



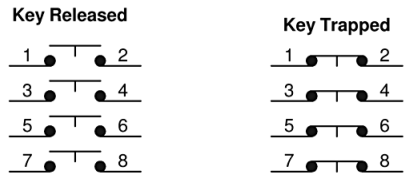
20 Amp rated switch only
 See PPS Ordering Guide on Page 4

2 NO / 2 NC



Available in all switch sizes.
 See PPS Ordering Guide on Page 4

4 NO



SD SERIES - SPECIFICATION DATA SHEET 2.8

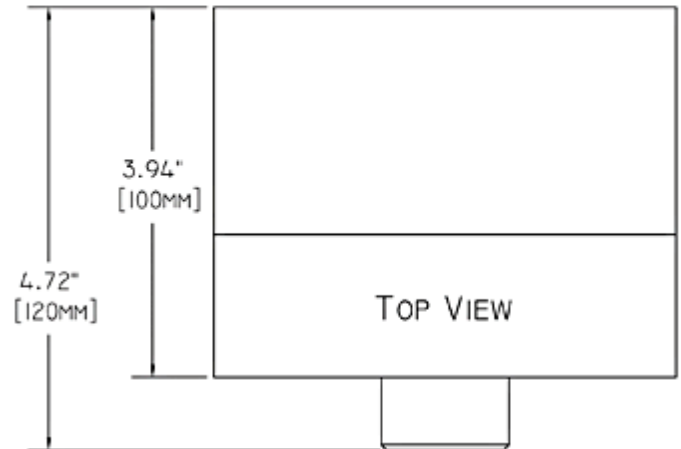
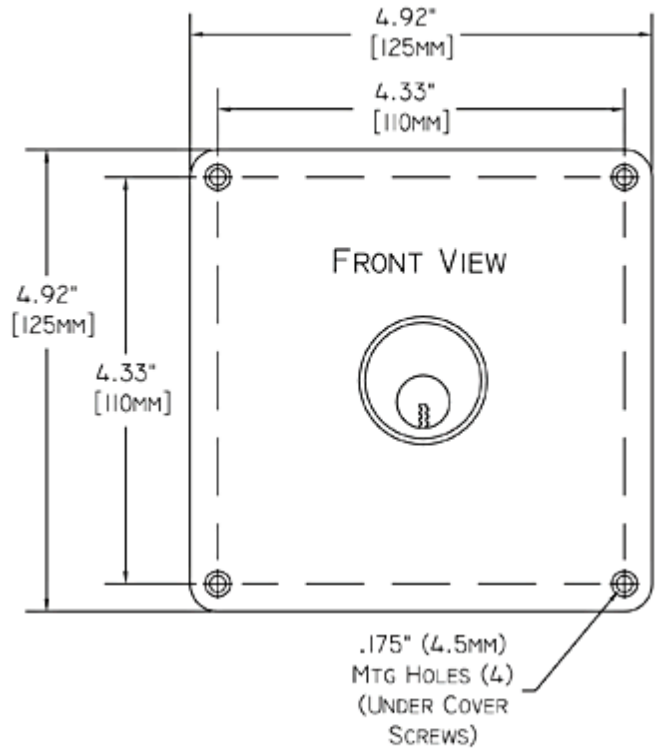


www.kirkkey.com

Kirk Key Interlock Company

211 Wetmore Ave. S.E., Massillon, OH 44646
Phone: 330.833.8223 • Fax: 330.833.1528 • Toll Free: 800.438.2442
Email: sales@kirkkey.com

Type PPS 20 Amp Panel Mounted Switch



SD SERIES - SPECIFICATION DATA SHEET 2.8



www.kirkkey.com

Kirk Key Interlock Company

211 Wetmore Ave. S.E., Massillon, OH 44646

Phone: 330.833.8223 • Fax: 330.833.1528 • Toll Free: 800.438.2442

Email: sales@kirkkey.com

Type PPS 20 Amp Panel Mounted Switch SD Type PPS Ordering Guide

Power Panel Mounted Switch Ordering Guide

ITEM MASTER NUMBER

1	2	3	4	5	6	7	8	9	10	11	12	13
K	P	P	S				1	0				
K Standard Duty				P P S o a w n i e t r i c h				Options: Where applicable. If none required, leave blank.				

Number of Cylinders

1	CYL	1	0
---	-----	---	---

Columns 5, 6, 7

2	2	A	2 NO / 2 NC - 20A Rating
4	0	A	4 NO - 20A Rating
4	0	B	4 NO - 25A Rating
4	0	C	4 NO - 40A Rating
4	0	D	4 NO - 63A Rating

*** REQUIRED INFORMATION ***

- Series of Interlock (Column 1)
- Qty of NO Contacts (Column 5)
- Qty of NC Contacts (Column 6)
- Amperage Rating (Column 7)

- Options Desired (where applicable)
- Ultimate End User, name and location
- Key Interchange
- Coordination Requirements
- Quantity

Stamp Key Interchange

COLUMN 10	-	No
	S	Yes

COLUMN 11

C	Push On Dust Cover (SD Series Only)
F	Flip Open Cover <small>See Data Sheet 3.1</small>

COLUMN 12

M	Hex Mounting Bolts
T	Tamperproof Bolts <small>Tamperproof Tools available. (See Data Sheet 3.2)</small>

(Mounting Bolts Not Applicable to Enclosed PPS)

COLUMN 13

-	Panel Mounted
E	Enclosed

Kirk Key Interlock Company
 211 Wetmore Ave S.E., Massillon, Ohio 44646
 Ph: 330.833.8223 Fax: 330.833.1528
 Toll Free: 800.438.2442