

SD SERIES - SPECIFICATION DATA SHEET 1.3



Kirk Key Interlock Company

9048 Meridian Circle NW, North Canton, OH 44720

Phone: 234.209.9301 • Fax: 330.497.4400 • Toll Free: 800.438.2442

Website: www.kirkkey.com Email: sales@kirkkey.com

Type T - Key Transfer Block



The Type T transfer block is an assembly of two or more lock cylinders in a single housing. Type T transfer blocks are designed to retain one or more keys (called held keys) while the remaining (initiating) key(s) are removed. This allows an exchange of keys for two or more interlock sequences. All initiating keys must be inserted into the Type T block before the retained keys can be removed. Once a retained key is removed, the initiating keys are trapped in the interlock.

Type T interlocks are called transfer blocks because there is no locking bolt projecting through the base for locking any moving part. Usually the need for a Type T transfer block can be eliminated by using multi-cylinder interlocks mounted on other devices, making it unnecessary to go through an additional transfer lock operation. The transfer block housing is made from brass.

OPTIONS

- Key Removable - specify which key(s) are initiating "E" and which key(s) are held "W".
- Multi-Cylinder - up to 15 cylinders available. Housings with 5 cylinders or more come with mounting holes at each end of the housing.
- Stamp Key Interchange - specify an alphanumeric code to be stamped on the cylinder face and the key (e.g. A1, A2, B1, etc. - up to 5 characters). See SD Series Data Sheet for Keys (3.4) and Terminology (4.1) for details.
- Auxiliary Switches - see SD Series Data Sheets for Type Thermoplastic (2.3), Type S (2.4) and Type K (2.5) for details.
- Protective Covers - see SD Series Data Sheet for Protective Covers (3.1) for details.
- Mounting Bolts - see SD Series Data Sheet for Mounting Bolts (3.2) for details.

NOTE: When the number of keys in the transfer step exceeds 8, it may be advantageous to use a Transfer Panel instead of a Type T interlock. See the SD Series Data Sheet for Transfer Panels (1.6) for details.

SD SERIES - SPECIFICATION DATA SHEET 1.3



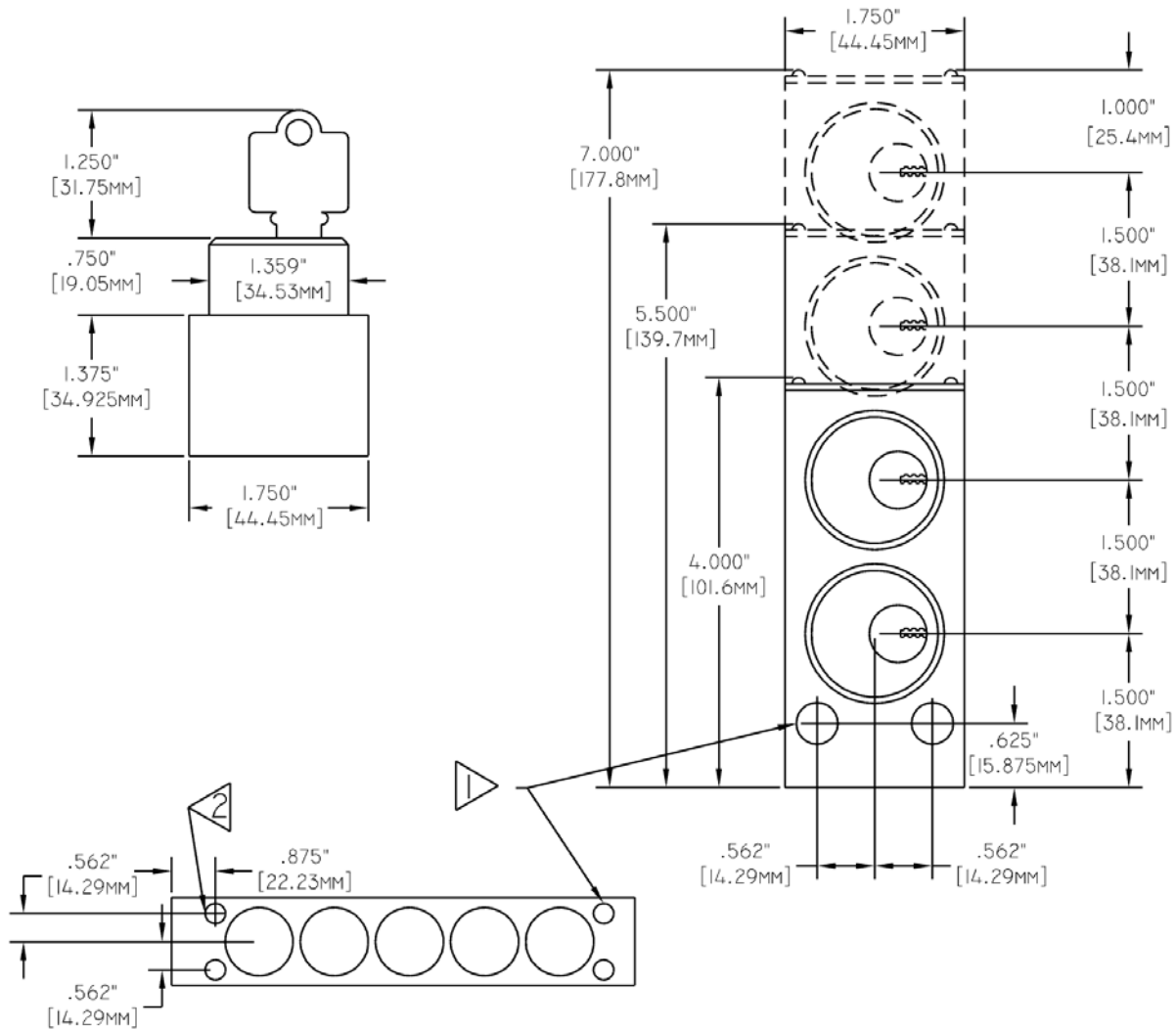
Kirk Key Interlock Company

9048 Meridian Circle NW, North Canton, OH 44720

Phone: 234.209.9301 • Fax: 330.497.4400 • Toll Free: 800.438.2442

Website: www.kirkkey.com Email: sales@kirkkey.com

Type T - Key Transfer Block



NOTES:

- 1) 0.4062" (10.32mm) holes for mounting bolts (2 holes).
- 2) Mounting holes for locks with 5 or more cylinders. Type T blocks with five or more cylinders will have mounting holes at each end of the block. The rear mounting holes are 7/8" (22.23mm) from the end. The total length of the five cylinder Type T transfer block is 9 1/2" (24.13cm). Add 1 1/2" (38.1mm) for every additional cylinder.