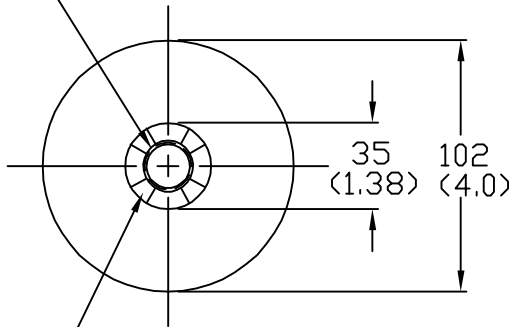
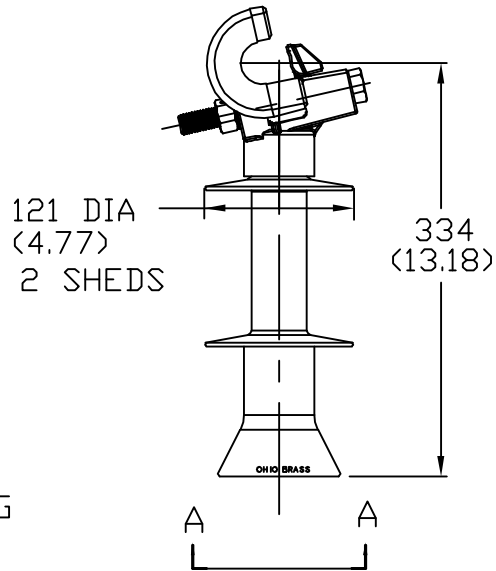


3/4-10 UFS-2B TAPPED HOLE
PER ANSI C29.7




CAST IN SERRATED LOCKING
PAD PER ANSI C29.7

VIEW A-A
2X SCALE



DRY ARCING DISTANCE _ _ _ _ _ 188 MM (7.4 IN)
 LEAKAGE DISTANCE _ _ _ _ _ 279 MM (11.0 IN)
 60 Hz DRY FLASHOVER _ _ _ _ _ 90 kV
 60 Hz WET FLASHOVER _ _ _ _ _ 70 kV
 IMPULSE POS. CRITICAL FLASHOVER _ _ _ 150 kV
 IMPULSE POS. WITHSTAND _ _ _ _ _ 140 kV
 SCL _ _ _ _ _ 12.5 kN (2800 LB)
 RCL _ _ _ _ _ 5.5 kN (1235 LB)
 NET WEIGHT _ _ _ _ _ 3.1 KG (6.9 LB.)

 HUBBELL® POWER SYSTEMS		TITLE		
		VERI LITE 15 KV LINE POST		
CONFIDENTIAL: THIS DRAWING AND ITS CONTENTS ARE CONFIDENTIAL AND THE EXCLUSIVE PROPERTY OF HUBBELL POWER SYSTEMS. NO PUBLICATION, DISTRIBUTION OR COPIES MAY BE MADE WITHOUT THE WRITTEN CONSENT OF HUBBELL POWER SYSTEMS. HUBBELL POWER SYSTEMS UNPUBLISHED ALL RIGHTS RESERVED UNDER THE COPYRIGHT LAWS.	SIZE	DWG NO.	CAT / PART / ASSY NO.	REV
	S	--	80S015-0K09	0
REV DATE	DO NOT SCALE THIS DRAWING		DRN BY JVR	DATE 06/13/13
06/13/13				SHEET 1 OF 1