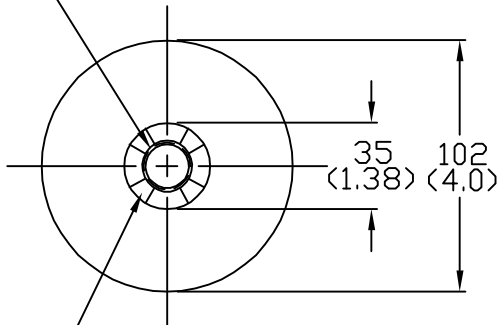
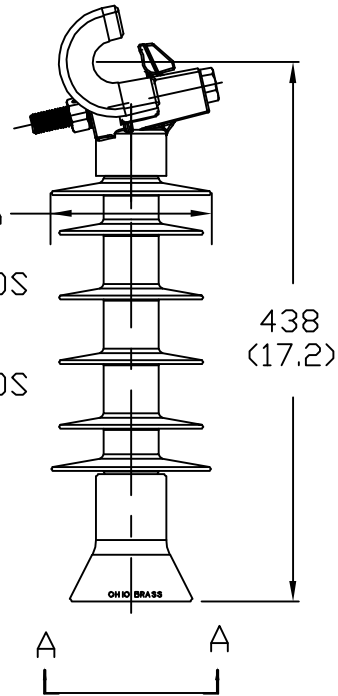


3/4-10 UFS-2B TAPPED HOLE
PER ANSI C29.7



CAST IN SERRATED LOCKING
PAD PER ANSI C29.7

VIEW A-A
2X SCALE



DRY ARCING DISTANCE	— — — — —	297 MM (11.7 IN)
LEAKAGE DISTANCE	— — — — —	662 MM (26.1 IN)
60 Hz DRY FLASHOVER	— — — — —	135 kV
60 Hz WET FLASHOVER	— — — — —	100 kV
IMPULSE POS. CRITICAL: FLASHOVER	— — — — —	215 kV
IMPULSE POS. WITHSTAND	— — — — —	200 kV
SCL	— — — — —	12.5 kN (2800 LB.)
RCL	— — — — —	5.5 kN (1235 LB.)
NET WEIGHT	— — — — —	3.7 KG (8.2 LB.)

<p>CONFIDENTIAL: THIS DRAWING AND ITS CONTENTS ARE CONFIDENTIAL AND THE EXCLUSIVE PROPERTY OF HUBBELL POWER SYSTEMS. NO PUBLICATION, DISTRIBUTION OR COPIES MAY BE MADE WITHOUT THE WRITTEN CONSENT OF HUBBELL POWER SYSTEMS. HUBBELL POWER SYSTEMS UNPUBLISHED ALL RIGHTS RESERVED UNDER THE COPYRIGHT LAWS.</p>			<p>HUBBELL® POWER SYSTEMS</p>	
	<p>TITLE VERI LITE 35 KV LINE POST</p>			
<p>REV DATE 06/13/13</p>	<p>SIZE S</p>	<p>DWG NO. --</p>	<p>CAT / PART / ASSY NO. 80S028-0K09</p>	<p>REV 0</p>
<p>DO NOT SCALE THIS DRAWING</p>		<p>DRN BY JVR</p>	<p>DATE 06/13/13</p>	<p>SHEET 1 OF 1</p>