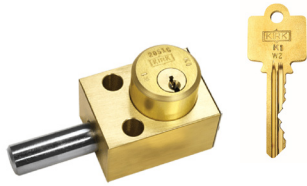
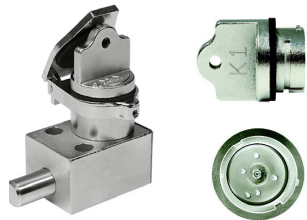




# SERIES COMPARISION GUIDE



**SD SERIES** - The SD Series trapped key safety interlocks feature the traditional keyed brass interlock design. It is comprised of a brass interlock housing and a 303 stainless steel lock bolt. The keys are a 7-pin nickel-silver key and brass tumbler lock cylinder. The SD Series is best suited for indoor applications and moderate industrial environments and temperatures.



**HD SERIES** - The HD Series is made entirely of electropolished 316 stainless steel and offers high performance standards in high temperature and/or corrosive environments. HD Series trapped key safety interlocks are the ideal choice for applications that require continuous operation in harsh industrial environments.

	SD SERIES	HD SERIES
<b>INTERLOCK COMPONENTS</b>		
Interlock Housing	Brass	Electropolished 316 SS
Lock Bolt	303 SS	Electropolished 316 SS
Key	Nickle-Silver	Electropolished 316 SS
Cylinder Housing	Brass	Electropolished 316 SS
Inner Turn Shaft	Brass	Electropolished 316 SS
Flip Open Dust Cover	316 SS	Electropolished 316 SS
<b>TYPICAL APPLICATIONS</b>		
Electrostatic Precipitator	✓	✓
Switchgear	✓	✓
Ports - Shore Power		✓
Perimeter Guarding	✓	✓
Uninterruptable Power	✓	
Lockout Tagout	✓	
<b>TEMPERATURE RATINGS</b>	-65F to +250F	-65 to +700F